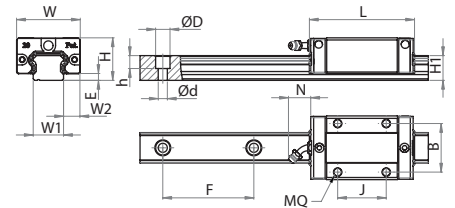
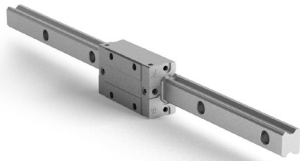


### Guida lineare con pattino ribassato

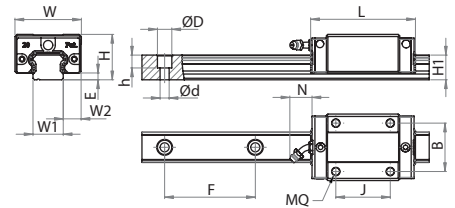
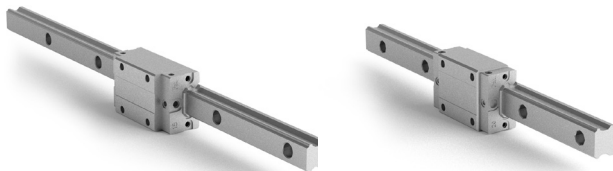
Linear guideway with low carriage



Riferimento Art. No.		Assemblaggio Assembly (mm)				Pattino Carriage (mm)					Rotaia Rail (mm)						Carico Load (kN)		Carrello Block	Rotaia Rail
Pattino Carriage	Rotaia Rail	H	W	W2	E	L	B	J	MQ	N	W1	H1	F	d	D	h	C0	C1	kg	kg/m
<b>C4251534S</b>	<b>C1611540S</b>	24	34	9,5	3,3	58,6	26	26	M4	5	15	13	60	4,5	7,5	6	19,6	9,3	0,17	1,28
<b>C4252042S</b>	<b>C1612040S</b>	28	42	11	4,5	69,3	32	32	M5	15,6	20	16,3	60	6	9,5	8,5	30,5	14,3	0,26	2,15

### Guida lineare con pattino standard

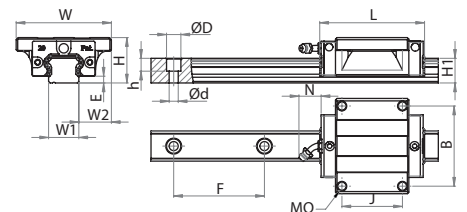
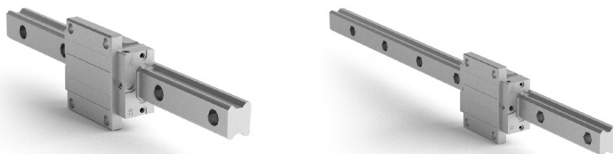
Linear guideway with standard



Riferimento Art. No.		Assemblaggio Assembly (mm)				Pattino Carriage (mm)					Rotaia Rail (mm)						Carico Load (kN)		Carrello Block	Rotaia Rail
Pattino Carriage	Rotaia Rail	H	W	W2	E	L	B	J	MQ	N	W1	H1	F	d	D	h	C0	C1	kg	kg/m
<b>C4261534S</b>	<b>C1611540S</b>	28	34	9,5	3,3	58,6	26	26	M4	5	15	13	60	4,5	7,5	6	19,6	9,3	0,19	1,28
<b>C4262044S</b>	<b>C1612040S</b>	30	44	12	4,5	69,3	32	36	M5	15,6	20	16,3	60	6	9,5	8,5	30,5	14,3	0,31	2,15
<b>C4262548S</b>	<b>C1622540S</b>	40	48	12,5	5,8	79,2	35	35	M6	15,6	23	19,2	60	7	11	9	41,1	20,1	0,45	2,88
<b>C4263060S</b>		45	60	16	7	94,8	40	40	M8	15,6	28	22,8	80	9	14	12	54,6	29,7	0,91	4,45

### Guida lineare con pattino flangiato

Linear guideway with flanged carriage



Riferimento Art. No.		Assemblaggio Assembly (mm)				Pattino Carriage (mm)					Rotaia Rail (mm)						Carico Load (kN)		Carrello Block	Rotaia Rail
Pattino Carriage	Rotaia Rail	H	W	W2	E	L	B	J	MQ	N	W1	H1	F	d	D	h	C0	C1	kg	kg/m
<b>C4271547S</b>	<b>C1611540S</b>	24	47	16	3,3	58,6	38	30	M5	5	15	13	60	4,5	7,5	6	19,6	9,3	0,21	1,28
<b>C4272063S</b>	<b>C1612040S</b>	30	63	21,5	4,5	69,3	53	40	M6	15,6	20	16,3	60	6	9,5	8,5	30,5	14,3	0,40	2,15
<b>C4272570S</b>	<b>C1622540S</b>	36	70	23,5	5,8	79,2	57	45	M8	15,6	23	19,2	60	7	11	9	41,1	20,1	0,57	2,88
<b>C4273090S</b>	<b>C1623040S</b>	42	90	31	7	94,8	72	52	M10	15,6	28	22,8	80	9	14	12	54,6	29,7	1,10	4,45
<b>C42735100S</b>	<b>C1623540S</b>	48	100	33	7,5	111,5	82	62	M10	16	34	26	80	9	14	12	81,1	42,4	1,50	6,25